

10G 6A™ F/UTP MC® MODULAR PATCH CORDS

Siemon uses the highest quality components combined with stringent manufacturing processes to produce the best performing, most durable modular patch cords available. Part of Siemon's 10G ip™ Cabling Solution, screened (F/UTP) 10G 6A MC patch cords meet or exceed all TIA-568-B.2-10 category 6A performance requirements. The end result is a patch cord that is capable of supporting next generation applications including 10GBASE-T and beyond.

Choose Siemon screened 10G 6A MC modular patch cords for a perfectly matched, 10G 6A F/UTP channel solution with unparalleled network performance.

Compatible with T568A/B wiring schemes

Boots feature an ultra slim design for high-density applications

10G 6A F/UTP MC cords feature category 7 S/FTP stranded cable for optimal transmission performance while effectively eliminating alien crosstalk

Optional color coding clip for identification purposes

LSOH cable jacket

High quality plug components ensure long term resistance to corrosion from humidity, extreme temperatures, and airborne contaminants

Cords are 100% transmission tested to ensure compliance with applicable standards requirements

Boot ensures proper bend relief, critical for category 6A performance

Removable colored clips allow field color coding even when cords are connected



6A
10G ip™
PATENTED

500 MHz
Meets or Exceeds
10GBASE-T and
Category 6A
Performance
Requirements

PATCH CORDS, PLUGS AND CABLE

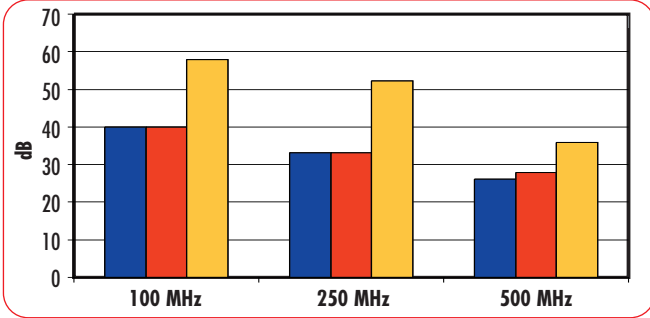
CONNECTING THE WORLD TO A HIGHER STANDARD

WWW.SIEMON.COM

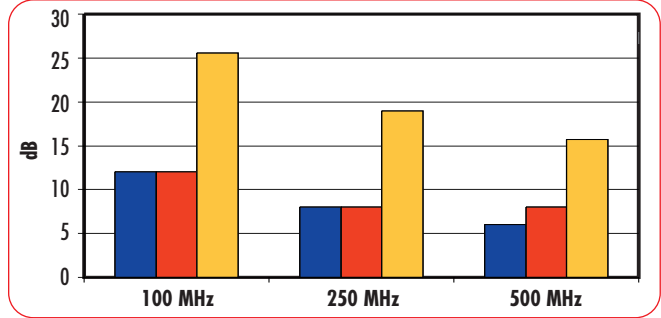


Channel Performance Data for 10G 6A™ F/UTP Solution*

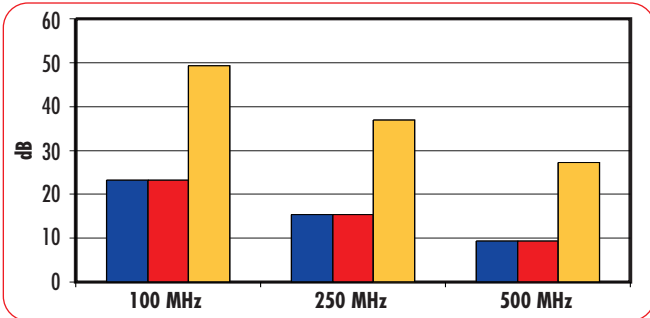
NEXT



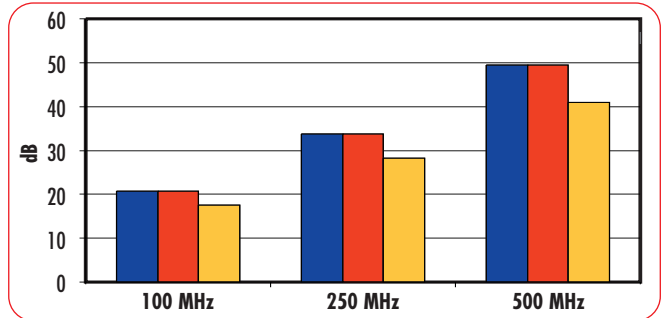
Return Loss



ELFEXT



Insertion Loss

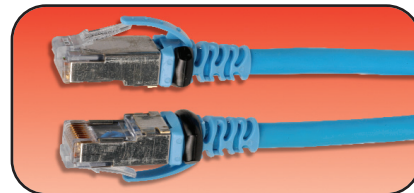


■ Cat 6A Limit ■ Worst Case ■ Typical

*Channel Performance Data utilizes 10G 6A F/UTP Cable, 10G 6A F/UTP MAX® Modules and 10G 6A F/UTP MC® Modular Cords


10G 6A F/UTP MC Modular Patch Cords:

MC6A-S(XX)M-(XX)L.....Screened 10G 6A, double-ended, 4-pair, stranded LSOH modular cord, T568A/B, color matching jacket/boot



Use 1st (XX) to specify length: 01 = 1m (3.3 ft.), 1.5 = 1.5m (4.9 ft.), 02 = 2m (6.6 ft.), 03 = 3m (9.8 ft.), 05 = 5m (16.4 ft.)
 Use 2nd (XX) to specify jacket/boot color: 01=black, 02=white, 03=red, 04=gray, 05=yellow, 06=blue, 07=green, 09=orange
 Ⓢ Add "B" to end of part number for bulk project pack of 100 cords

Color Coding Clips:

CLIP-(XX)Color coding clip, bag of 25 
 Use (XX) to specify color: 01=black, 02=white, 03=red, 04=gray, 05=yellow, 06=blue, 07=green

Because we continuously improve our products, Siemon reserves the right to change specifications and availability without prior notice. MC®, MAX®, TERA®, BladePatch® and 10G 6A™ are trademarks of Siemon

For additional resource information:

Visit our web site at www.siemon.com

The Americas
 Watertown, CT USA
 Phone (1) 860 945 4200

Europe/Middle East/Africa
 Surrey, England
 Phone (44) 0 1932 571771

Asia/Pacific
 Shanghai, P.R. China
 Phone (86) 21 6390 6778

Japan
 Tokyo, Japan
 Phone (81) (3) 5437 1580

For related product information request Spec Sheet(s):

- 10G 6A F/UTP MAX® Modules (PROD-SS-10G6MXS)
- 10G 6A F/UTP BladePatch® (PROD-SS-10G6BDPS)
- 10G 6A F/UTP Cable (PROD-SS-10G6F/UTPCBL)
- TERA® 1000 MHz Cable (PROD-SS-CBL7S1000)
- MAX Series Modular Faceplates (PROD-SS-MXF)
- TERA-MAX Patch Panel (PROD-SS-TERAPP)