



X 2, 4, 6 & 12 Way Versions

X Accepts Category 5e, Category 6 or Category 6A Modules / Jacks

X 25 Year System Warranty

Features

- Accepts Category 5e, Category 6 or Category 6A Modules / Jacks
- 'L' Brackets available
- 2, 4, 6 & 12 Way
- 25 and 32 mm Versions
- 6c aperture size
- 25 Year System Warranty

Product Overview

The Excel Grid Outlet Position (GOP) Box Plus has been developed from the successful original versions. This range is available in four versions from 2 Way to 12 Way. The 2 and 4 way are available with a 25mm flexible conduit fixing point. The 4, 6 & 12 way are available with a 32mm flexible conduit fixing point. The range has been developed for fixing to the end of flexible conduit typically where outlets are presented in a grid layout with cable containment mounted within a raised floor system.

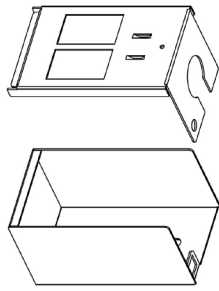
The GOP Box then has a degree of flexibility to be positioned within the radius of the flexible conduit to suit the office layout. 25 mm and 32 mm 'L' Brackets are available to fix the other end of the flexible conduit to the floor slab. GOP Boxes are typically then attached to the underside of the desk, the flexible conduit passing through the floor tile via a grommet. In the case of the 12 way it is an ideal cost effective option for use as a Consolidation Point.

These Plus versions are enhanced with cable tie saddles adjacent to the conduit fixing point to accept either nylon or hook & loop ties. This permits the cable to be secured if required. Additionally the GOP box has a hole at each end of the upper case to accept self-tap screws for fixing to adaptor plates or bespoke brackets. Supplied with the GOP Boxes are black rubber blanks for the un-used 6c apertures. The 2 way is supplied with 1 blank, the 4 way is supplied with 2 blanks the 6 way with 4 blanks and the 12 way has 8 blanks. The blanks are also available separately.

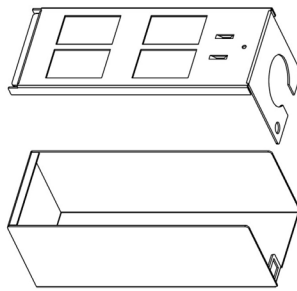
The flexible conduit fixing hole is slotted to aid cable installation. As the flexible conduit hole is part of the jack mounting metal work it ensures easy termination of the outlet while maintaining the cable management. The base has two fixing holes for mounting where required. The two parts of the box are assembled with machine screws.

With exception of the 12 way the GOP Boxes and 'L' Brackets are sold in packs of 10 to reduce packaging waste. The flexible conduit is sold separately.

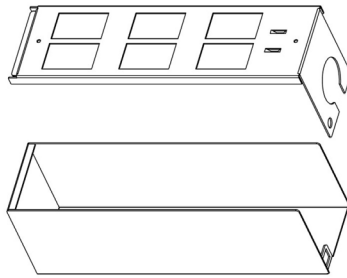
Excel Grid Outlet Position (GOP) Box Plus



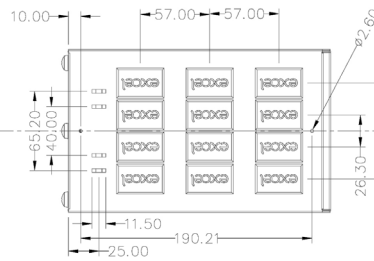
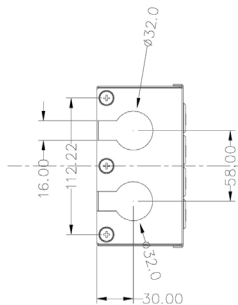
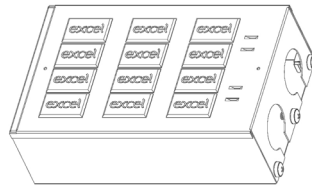
2 Way GOP Box Plus



4 Way GOP Box Plus



6 Way GOP Box Plus



Product Details

Item	Value
Excel 2 Way GOP Box Plus	105 mm Length x 62 mm Width x 55 mm Height
Excel 4 Way GOP Box Plus	160 mm Length x 62 mm Width x 60 mm Height
Excel 6 Way GOP Box Plus	220 mm Length x 62 mm Width x 70 mm Height
Excel 12 Way GOP Box Plus	216 mm Length x 134 mm Width x 71 mm Height
6c Blank Material	Rubber
GOP Box Plus Material	Mild Steel
Colour	Black
RoHS	Compliant

Compatibility



Specification

	100-757 Cat 5e Unscr Low Profile 6c Module	100-202-WT & 100-202-BK Cat 5e Unscr Low Profile Toolless Keystone Jack + 100-022 6c Angled Shutter	100-297 Cat 6 Unscr Low Profile 6c Module	100-215-WT & 100-215-BK Cat 6 Unscr Low Profile Toolless Keystone Jack + 100-022 6c Angled Shutter	100-156 Cat 6 _A Unscr Keystone Jack + 100-022 6c Angled Shutter	100-181 Cat 6 _A Low Profile Scr Keystone Jack - Toolless + 100-022 6c Angled Shutter
2 Way GOP Box Plus - 25 mm	Yes	Yes	Yes	Yes	Yes	Yes
4 Way GOP Box Plus - 25 mm	Yes	Yes	Yes	Yes	Yes	Yes
4 Way GOP Box Plus - 32 mm	Yes	Yes	Yes	Yes	Yes	Yes
6 Way GOP Box Plus - 32 mm	Yes	Yes	Yes	Yes	Yes	Yes
12 Way GOP Box Plus - 32 mm	Yes	Yes	Yes	Yes	Yes	Yes

Part Number Information

Part Number	Description
350-639	2 Way GOP Box Plus - 25mm - (Pack of 10)
350-639	4 Way GOP Box Plus - 25mm - (Pack of 10)
350-641	4 Way GOP Box Plus - 32mm - (Pack of 10)
350-642	6 Way GOP Box Plus - 32mm - (Pack of 10)
350-643	12 Way GOP Plus 32mm - (Each)
350-645	LJ6C Black Rubber Blank - (Pack of 10)
750-102	25 mm Flexible Conduit "L" Bracket Plus - (Pack of 10)
750-103	32 mm Flexible Conduit "L" Bracket Plus - (Pack of 10)

System Warranty

The Excel System Warranty provides a 25-year product and applications assurance of compliance with the industry performance standard appropriate to the class of cabling installed. The warranty may be applied for by an accredited Excel Partner who has designed, supplied and installed the said system.



Excel is a world-class premium performing end-to-end infrastructure solution - designed, manufactured, supported and delivered - without compromise.

Contact us at sales@excel-networking.com

