

# MAX® 6 MODULES

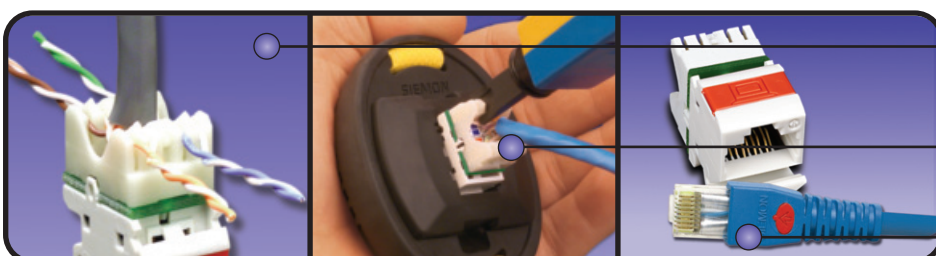
The MAX 6 module provides performance far exceeding category 6 connecting hardware performance specifications. It also insures backwards compatibility with components and systems of lower performing categories.

Installers and end users benefit from other rich features incorporated into the MAX 6 module. It's compact design is ideal for high density applications. Up to six modules can be utilized in a single gang faceplate and twelve modules in double gang faceplate. Also, the angled MAX 6 modules provide a gravity feed, low-profile design for the work area — greatly improving patch cord management in installations where clearance is at a minimum.

The flat MAX 6 modules are just as versatile — perfect for flush mount applications or with MAX series patch panels or surface mount (SM®) boxes. This solution makes it possible to configure a wide variety of mixed media solutions.



MAX 6 modules are available in many colors, ideal for color-coding



Pyramid™ Wire Entry System on S310® blocks separates paired conductors when lacing cables to simplify and reduce installation time

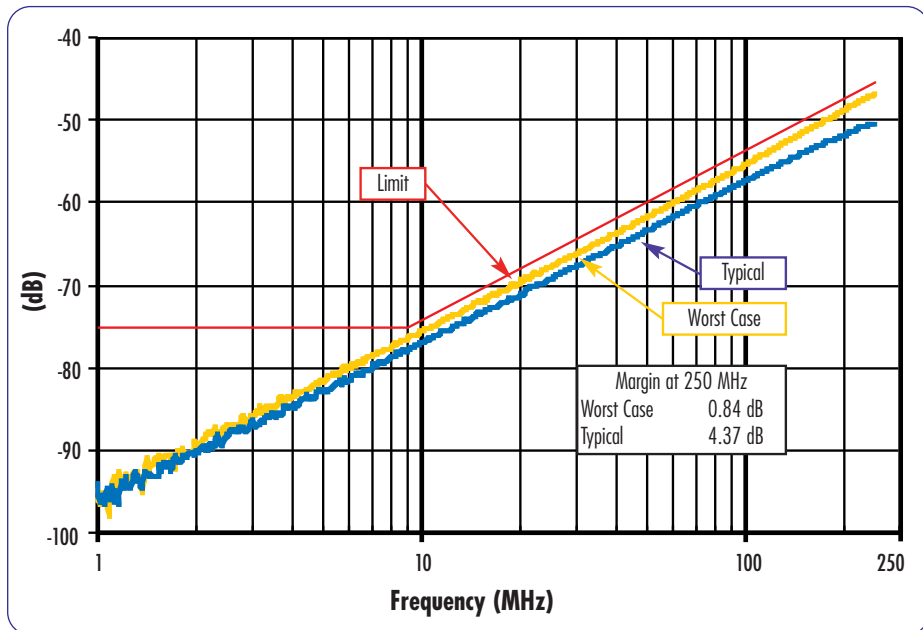
Siemon's Palm Guard with MAX 6 insert assists in securing module during termination

Use MC 6 modular cords to unlock the performance of Siemon MAX 6 modules

# PRODUCT INFORMATION

## Test Data:

### Near-End Crosstalk Performance:



### MAX® 6 Modules:

- MX6-(XX) .....Angled module with T568A/B wiring, rear strain relief cap and protective color-matching rubber door
- MX6-F(XX).....Flat module with T568A/B wiring, rear strain relief cap
- MX6-K(XX) .....Keystone module with T568A/B wiring and strain relief cap



MX6-(XX)



MX6-F(XX)



MX6-K(XX)

Use (XX) to specify color:

01 = black, 02 = white, 03 = red, 04 = gray, 05 = yellow, 06 = blue, 09 = orange, 20 = ivory, 25 = bright white, 80 = light ivory, 82 = alpine white

Add "-D" for color-matching door for flat version

ⓑ Add "B" to end of part number for bulk project pack of 100 modules

Angled and flat modules include one color-matching, one red, and one blue icon

Door color is clear for angled red, yellow, blue and orange modules, white for flat

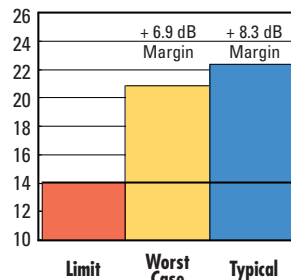
Note: Keystone version is designed for integration with various international mounting products and not compatible with MAX mounting hardware

Ⓥ Add "VP" to end of part number for value pack option. Value pack is a kit of 250 jacks, doors, term caps and color matching icons. (Available in flat / angled only. Door only included with angled version.)

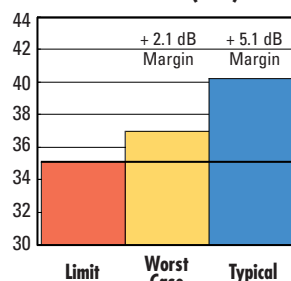
Because we continuously improve our products, Siemon reserves the right to change specifications and availability without prior notice.

HD®, MC®, MAX® and S310® are trademarks of Siemon

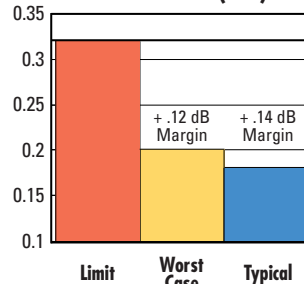
### Return Loss at 250 MHz (dB)



### FEXT Loss at 250 MHz (dB)



### Attenuation at 250 MHz (dB)



### For related product information request Spec Sheet(s):

- MAX Series Modular Mounting Frames (PROD-SS-MMT)
- MAX Series Modular Faceplates (PROD-SS-MXF)
- MAX Series Patch Panels (PROD-SS-MXP)
- Termination Tools (PROD-SS-S78)